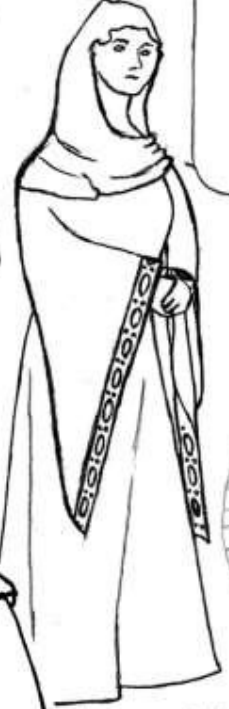


Regia Anglorum  
1042-1079AD



European style veil



Norman style

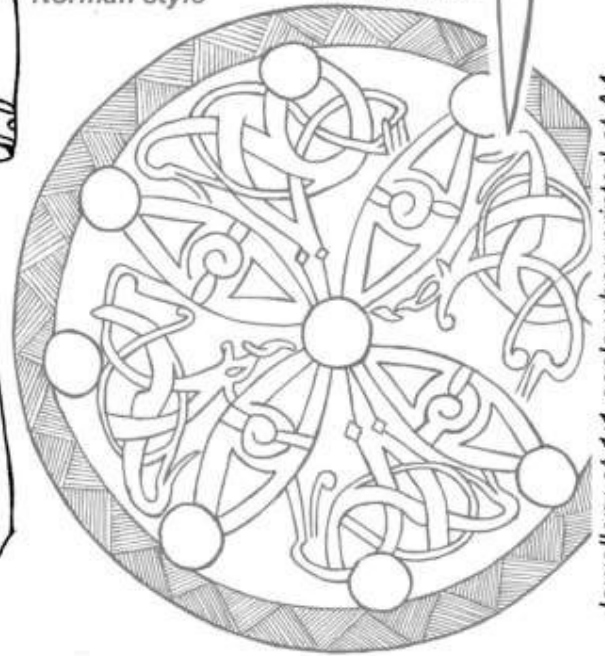


Decorative brooches

Bliaut square style



Fastening Brooches



Jewellery at 1:1 scale when printed at A4

**Women's Clothing - Late (1042–1079AD)**

	<b>Encouraged (Very Common)</b>	<b>Optional (Less Common)</b>	<b>Allowable (Interpreted or Rare)</b>	<b>Unacceptable</b>
<b>Head</b>	Veil or wimple over a cap, headscarf or wide headband and that shows the throat	Decorated headband worn under veil or wimple [RICH]	Headscarves [POOR] Hoods [POOR] Veils with long tails [RICH]	Bareheaded women / teenage girls Obviously dyed hair Makeup Any tie or fillet worn over the head covering Bead necklace Palla
<b>Under Shift</b>	Shift made from linen, ankle length with a bias edged keyhole or oval neck hole Natural linen Tight sleeves with rucking	Dyed a light colour or bleached Embroidery [RICH]	Different colour square or round facing Dyed a strong colour Short visible shift, just above the ankle [POOR]	Other decoration Visible shift above mid-calf Pleated underdress Broach worn at throat
<b>Dress</b>	Woollen ankle length dress with keyhole or oval neck hole and loose sleeves to mid forearm Embroidery [RICH]	Norman style dress with droopy sleeves to mid forearm [N] [RICH] Decorated with: - Braid - Tablet weave (1 to 3 colours) - Brocaded tablet weave [RICH] - Embroidery [RICH] - Silk ribbons [RICH]	Cinching at sides [N] Overdress to mid shin (must be worn with ankle length shift) Tight sleeves Dress made from linen <i>Decorated hem with a facing, embroidered facing or braid</i> <i>'Decorative' brooch [RICH]</i> <i>Dress to mid forearm and mid shin with no visible under shift [POOR] [R]</i>	Dress above mid-shin Different coloured gores or sleeves Other decoration including chunky wool Hangerocks or oval brooches
<b>Belt &amp; Bags</b>	No belts or girdles	Cloth sash in same material as garment worn with - dress or mantle Leather or cloth satchels or sacks <i>Drawstring pouch</i>	Braided or woven textile girdle (no dangling ends) Hidden leather tie belt Small drawstring or tagged pouches Forged snips in sheath <i>Small knife in sheath</i>	Chunky wool girdle Leather belts with buckles Box pouch Modern snips or scissors
<b>Cloak</b>	Mantles worn with a matching cloth sash	Cloaks clasped at the chest with disc brooch	Cloak pinned with pin or penannular	Trefoil brooches Equal armed brooches Backtrains Different coloured lining
<b>Legs</b>	Bare legs		Trousers or hose if hidden Leg bindings	
<b>Shoes</b>	Low shoes or ankle boots (to bottom of ankle bone) Bare feet		Nålebound socks Ankle boots (up to top of ankle bone) Foot wraps or sock bags Footed hose or half hose	Tall boots (higher than top of ankle bone) 8 <sup>th</sup> C. or earlier patterns

[R] = Restricted; [N] = Norman; [RICH] = Thegn / Odalsbondi / Hauldr ; [POOR] = Bonded / Serf / Slave

Regia Anglorum  
1042-1079AD



Norman front-split shirt

European style



Norman style



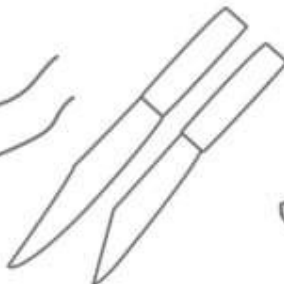
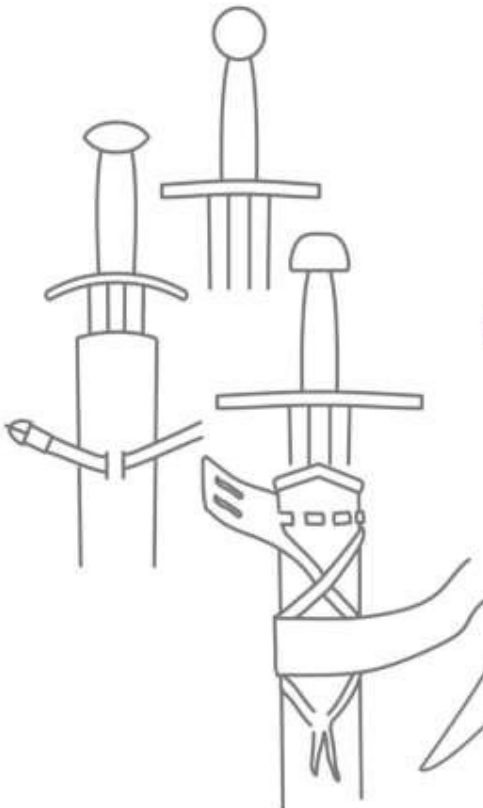
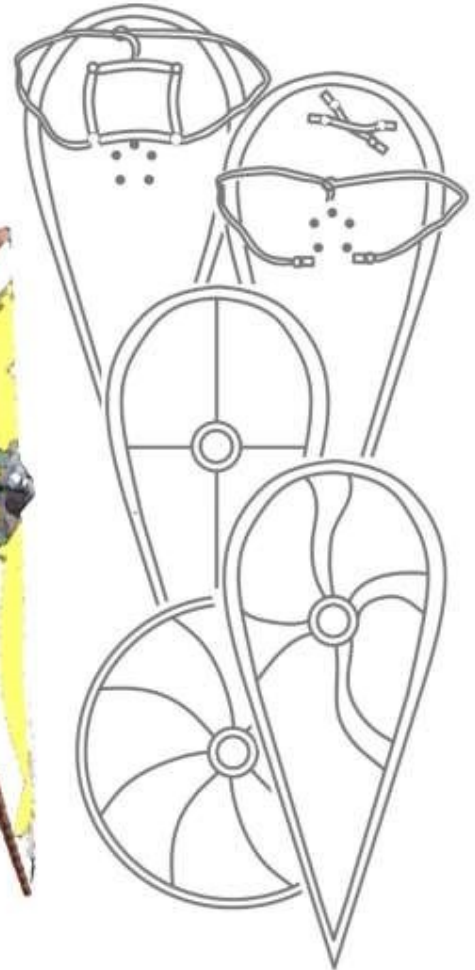
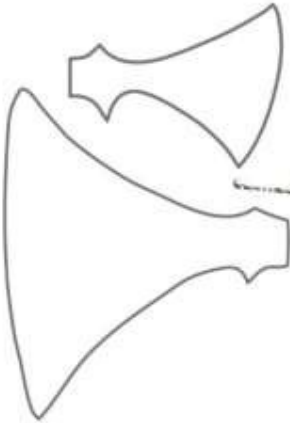
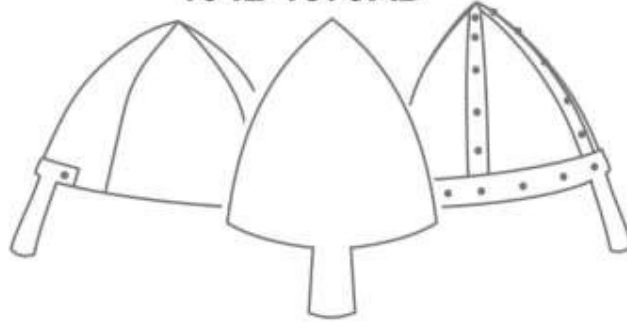
Jewellery at 1:1 scale when printed at A4

**Men's Clothing - Late (1042–1079AD)**

	<b>Encouraged (Very Common)</b>	<b>Optional (Less Common)</b>	<b>Allowable (Interpreted or Rare)</b>	<b>Unacceptable</b>
<b>Head</b>	Bare headedness	Woollen hoods	Linen or leather hoods Skull caps Straw hats [POOR][R] Pointed hats [RICH]	Cloth "Phrygian caps" Obviously dyed hair Bead necklaces Frisian caps Nålebound caps [R] Fur caps
<b>Under Shirt</b>	Natural or bleached shirt made from linen with a bias edged keyhole or oval neck hole Side split	Shirt as outer garment <i>with hem ending up to 2" above the knee</i> Shirt made from wool Dyed a light colour Shirts with skirt gores Front split [N]	Different colour round or square facing Dyed a strong colour Embroidery [RICH]	Shirts visible below tunic Other decoration
<b>Tunic</b>	Tunics made of wool Rucked up to knee length with tight rucked sleeves Tunics with faced oval keyhole style neck hole Keyhole or oval neck hole with bias edging Neck hole closed with ties	Tunics made of linen Tunics with faced square keyhole style neck hole Decorated with: - Braid - Tablet weave (1 to 3 colours) - Brocaded tablet weave [RICH] - Embroidery [RICH] - Silk ribbons [RICH] Facing and decoration around the hem <i>Simple embroidery around the skirt</i> <i>Rucked tunics with hems that end up to 2" above the knee</i>	Shorter tunics un-rucked to knee length [N] Tight sleeves with no rucking Tunic closed with authentic hook & eye Front split [R] Side split	Loose sleeves Different coloured gores or sleeves Shorter than 2" above knee level when unbelted Brooch worn at throat Decorated with chunky wool
<b>Belt &amp; Bags</b>	Buckled leather belts or cloth ties hidden by tunic Small knife in sheath	Split end belts Visible leather belt or cloth tie Leather or cloth satchels or sacks <i>Drawstring pouch</i>	Drawstring or tagged pouches worn on belt	Belts knotted around the buckle Long hanging belt end Belts with metal plates Chunky wool belt Box pouch
<b>Cloak</b>	Rectangular cloaks pinned at shoulder with disc brooch Hanging length from waist to knee	Pinned with metal or bone pin Cloak ribbons [RICH] Edged with different coloured facing	Cloaks pinned at chest Fur or piled wool lining Cloaks with tassels Pinned with penannular Different coloured linings [RICH][R] Circular style cloaks Hooded mantle [POOR][R]	Viking jackets Mantles Cloaks pinned at hip Different coloured lining Leather or fur cloaks
<b>Legs</b>	Wool trousers or hose tight to legs with leg bindings Trousers or hose with integral feet Bare legs [POOR]	Wool trousers or hose tight to legs with no leg bindings	Linen trousers or hose Tight leather hose worn with spurs [RICH] Cross gartering [N] Elaborate ties below knee [RICH] Non-visible Braies worn on their own	Viking baggy trousers Loose legged trousers
<b>Shoes</b>	Low shoes or ankle boots (to bottom of ankle bone) Bare feet	Ankle boots (up to top of ankle bone)	Norman style laced tall boots [N] Nålebound socks Foot wraps or sock bags	Other boot styles 8 <sup>th</sup> C. or earlier patterns

[R]= Restricted; [E]= English; [V]= Viking; [N]= Norman; [RICH]= Thegn / Odalsbondi / Hauldr ; [POOR]= Bonded / Serf / Slave

Regia Anglorum  
1042-1079AD



**Wargear - Late (1042–1079AD)**

	<b>Encouraged (Very Common)</b>	<b>Optional (Less Common)</b>	<b>Allowable (Interpreted or Rare)</b>	<b>Unacceptable</b>
<b>Helm</b>	Conical helm – riveted panels / welded panels or 'single piece'	Helms with aventails Helms without nasals	Domed helm – riveted Great Polish helm [V] [R] Hardened leather cap	Spectacle helms Boar crested helms Coppergate helms Faceplated / kettle helms
<b>Armour</b>	Mail shirt length from below groin to knee Mail shirt with integral coif and chest square ventail Front/back split mail shirt Leather jack, leather or cloth padded gambeson worn under mail 6 - 8mm alternating riveted & welded	Unsplit mail shirt Leather jack or leather padded gambeson worn as armour 6 – 8mm riveted	Separate coifs (should be disguised) Side split mail shirt Mailed arm/leg protection -or- long sleeves & hood [RICH, post 1066AD] <i>Cloth padded gambeson worn as armour [R]</i> Butted / riveted links up to 10mm <i>Simple leather gloves</i>	Vandyked mail shirt Splinted arms or legs Lamellar / Scale Cuir Boilli / Plate armour <i>Integral mail covered mittens</i> <i>Separate mail covered gloves</i>
<b>Shield</b>	Kite shield with boss <i>Large round shields that extend past the elbow by 2" or more</i> Lenticular round shield Sewn on leather or rawhide edge Painted in a single colour	Smaller shields that don't cover the elbow Flat round shield Nailed on leather or rawhide edge Kite shield painted with zoomorphic design [N][RICH] Painted in a cross or simple design Painted in up to 3 colours	Round or lenticular shields painted in Ringerike, Urnes [E][V][RICH] Painted in other simple geometric design Painted in 4 or more colours [R]	Flat topped kite Unbossed shield Rectangular or oval shields Painted in other art style or design
<b>Spear</b>	1-handed spear Angular shaped heads		<i>2-handed spears or winged spears with blade of 8" – 16" [after 1/1/2017]</i> Leaf shaped heads	Angon
<b>Knife</b>	<i>Seaxes with blades from 7" to 10"</i> Wood handles	Bone handles Decorated knife sheath horizontally hung	<i>Seaxes with blades up to 12" [until 1/1/2017]</i> Worked antler handles Undecorated sheath Composite wood / bone / stone handles [RICH]	Double edged knives Un-sheathed knives Norse style blades Unworked antler handles Wooden handles with bark
<b>Sword</b>	Brazil, disc & tea cosy pommels on swords Swords on sword belts Composite wooden / leather plain scabbard	Swords on baldrics Other C11th sword types	C10 <sup>th</sup> sword types	Unscabbarded weapons C8th & C9th sword types Single edged swords Langseax Decorated scabbards
<b>Other</b>	Broadaxes (Dane axe) <i>Axes hafted with wooden wedges</i>	Hand axes without beards	Hand axes with beards Leather axe loops Edge protector for axe Mace [RICH] [R]	Francisca Metal axe rings Flanged mace
<b>Missile</b>	Self-bow with arrows in quivers Bodkin heads Javelins		Re-curve Self-bow Crossbows (locking nut) [N] Slings	

[R]= Restricted; [E]= English; [V]= Viking; [N]= Norman; [RICH]= Thegn / Odalsbondi / Hauldr ; [POOR]= Bonded / Serf / Slave